

# Welcome Home

IT'S YOU. THROUGH & THROUGH.

*Greenfield*   
C A B I N E T R Y

Cabinets: Full Access, Hancock A,  
Paint Grade, Surfside  
Design by (also featured on covers):  
FMA Interior Design, Chicago, IL



# FORM, MEET FUNCTION. FUNCTION, MEET FORM.

A MATCH MADE IN GREENFIELD HEAVEN.

Crafted for you, never pulled from a warehouse.  
Richly finished, in just the colors you desire.



## **KITCHEN**

Pages 4-43

## **BATH**

Pages 44-63

## **MUDROOM & LAUNDRY ROOM**

Pages 64-71

## **FAMILY ROOM & HOME OFFICE**

Pages 72-83

## **OTHER SPACES**

Pages 84-95

### **CREDIBILITY COUNTS.**

Greenfield only engages with kitchen & bath market leaders to design and sell our cabinets.

*Greenfield*   
CABINETS

# KITCHEN



Your kitchen should work as hard as you do. Beautiful, sure. Durable, a must. Explore these innovative Greenfield kitchens by authorized designers.

Wall cabinets: Full Access, Augusta A, Paint Grade, Decorators White by Benjamin Moore®  
Base cabinets: Full Access, Farmington, Paint Grade, Decorators White by Benjamin Moore®  
Design by: Housefitters & Tile Gallery, Nantucket, MA



**PAINTED**

Pages 6-21

**STAINED**

Pages 22-29

**TWO-TONED**

Pages 30-43

Cabinetry: Full Access, Farmington,  
Paint Grade, Maxi Teal by Sherwin-Williams®  
Design by: Design Group Three, Inc., Milwaukee, WI



Pages 6-21

# KITCHEN | PAINTED



# NATURAL AP





# PEAL



Cabinetry: Full Access, Augusta A, Paint Grade, Cameo  
Design by: Kitchens Galore, Millbrae, CA



# *Dark*

Wall cabinets: Beaded Inset, Augusta A,  
Paint Grade, Inkwell by Sherwin-Williams®  
Base cabinets and island: Full Access, Augusta A,  
Paint Grade, Inkwell by Sherwin-Williams®  
Design by: KitchenLab, LLC, Chicago, IL



*but Never Dreary*



# LAID BACK LUXE



Cabinetry: Beaded Inset, Dalton 275 A,  
Paint Grade, Surfside  
Design by: Housefitters & Tile Gallery,  
Nantucket, MA



# Midcentury Match

The images shown in this brochure are reasonably accurate. Please contact your Greenfield dealer to see actual samples.



Cabinetry: Full Access, Augusta A,  
Paint Grade, Sealskin  
Design by: KitchenLab, LLC, Chicago, IL

# CLEAN SL



Wall cabinets: Full Access, Augusta A, Paint Grade, Decorators White by Benjamin Moore®  
Base cabinets: Farmington, Paint Grade, Decorators White by Benjamin Moore®  
Design by: Housefitters & Tile Gallery, Nantucket, MA



ATE





# *Calm, Cool and*



*Collected*

Cabinetry: Beaded Inset, Deerfield 275 D,  
Glacier, Grey Glaze  
Design by: C/S Design Studio, LLC, Fairfax, VA

Wall cabinets: SR Inset, Deerfield 275 A,  
Paint Grade, Surfside  
Base cabinets and island: Full Access,  
Deerfield 275 A, Paint Grade, Surfside  
Design by: KitchenLab, LLC, Chicago, IL

# BEACHY KEEN









Pages 22-29

# KITCHEN | STAINED

Cabinetry: Full Access, Custom Door, Quarter Sawn White Oak, Custom Stain  
Design by: Dimon Designs, Mundelein, IL



# *Comfort Zone*





Cabinetry: Full Access, Whitman 275 A,  
Walnut, Custom Stain, Black Glaze  
Design by: The Corsi Group, Indianapolis, IN





Perimeter: Full Access, Custom Door, Quarter Sawn White Oak, Natural, Limed  
Island: Full Access, Ashbourne 231 A, Quarter Sawn White Oak, Natural, Limed  
Design by: Housefitters & Tile Gallery, Nantucket, MA

CHIC

# MODERN MA



Cabinetry: Full Access, Estridge, Comp Qtr Walnut, Natural  
Design by: FMA Interior Design, Chicago, IL







Pages 30-43

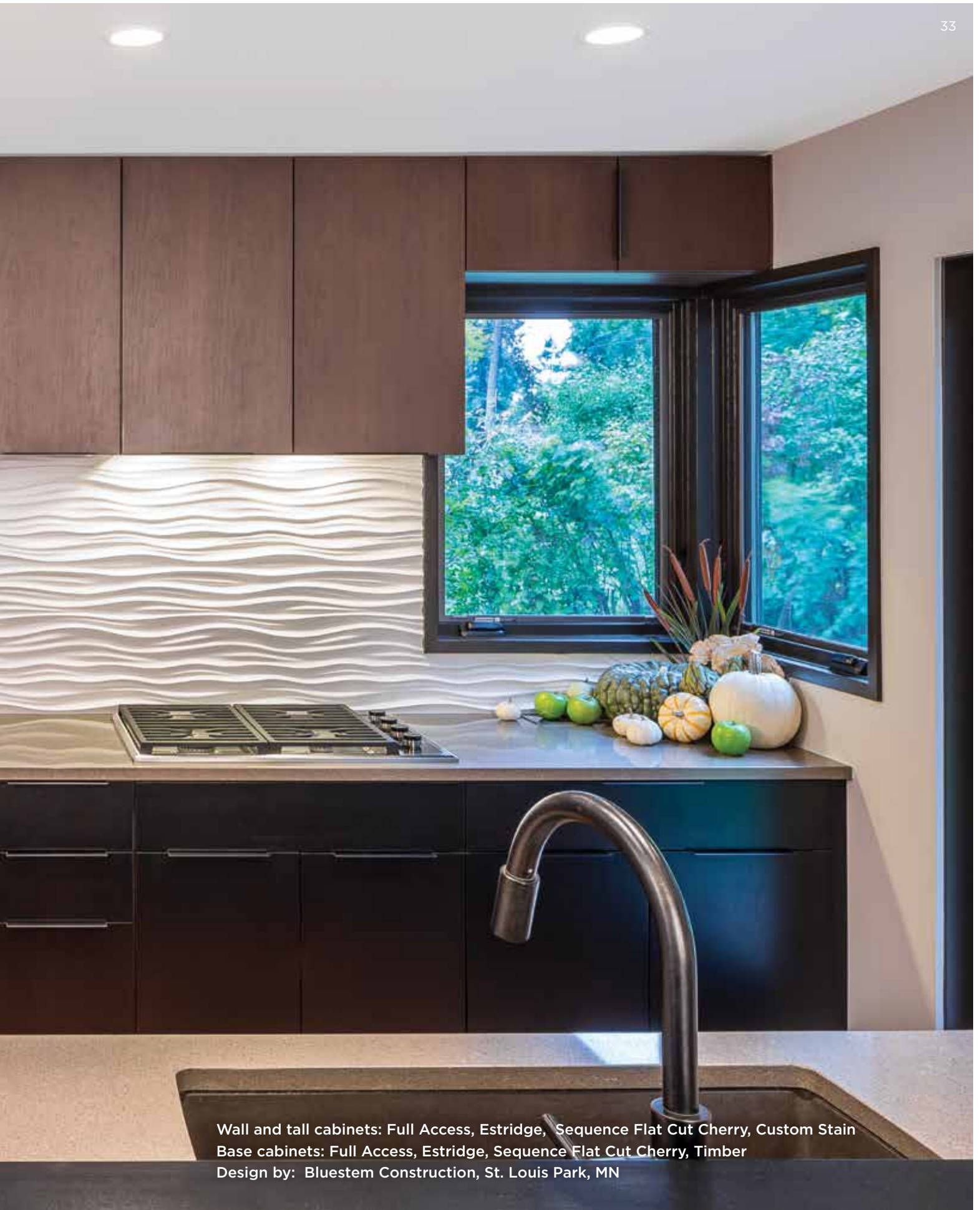
# KITCHEN | TWO-TONED

Wall cabinets: Full Access, Augusta A, Alder, Fawn, Brown Glaze  
Base cabinets: Full Access, Farmington, Jack Pine by Benjamin Moore®  
Design by: Bluestem Construction, St. Louis Park, MN



# MAD ABOUT MODERN





Wall and tall cabinets: Full Access, Estridge, Sequence Flat Cut Cherry, Custom Stain  
Base cabinets: Full Access, Estridge, Sequence Flat Cut Cherry, Timber  
Design by: Bluestem Construction, St. Louis Park, MN





# Picture Perfect

Perimeter: Full Access, Jackson A, Paint Grade, Sealskin  
Island: Full Access, Jackson A, Paint Grade, Pewter  
Wet bar: Full Access, Jackson A, Paint Grade, Eucalyptus  
Design by: Kregel & Hood, LLC, Chicago, IL



# *Pure and Simple*



Perimeter: Full Access, Eastlake A, Paint Grade, Surfside  
Island: Full Access, Eastlake A, Paint Grade, Hale Navy by Benjamin Moore®  
Design by: New Perspective Cabinetry and Design, LLC, Westport, CT

# INDUSTRIAL





Perimeter: Modern Overlay, Kennett, Alder, Coastal  
Island: Modern Overlay, Kennett, Quarter Sawn White Oak, Barnwood, Limed  
Design by: FMA Interior Design, Chicago, IL



# *Time Honored*





Perimeter: ER Inset, Catalina 275 A, Paint Grade, Surfside  
Island and hutch: ER Inset, Catalina 275 A, Walnut, Custom Stain  
Design by: Dove Design Studio, Short Hills, NJ



# COZY CORNER

The images shown in this brochure are reasonably accurate. Please contact your Greenfield dealer to see actual samples.



Base Cabinets: Full Access, Augusta A, Paint Grade, Maxi Teal by Sherwin-Williams®  
Design by: Kitchens Galore, Milbrae, CA



# BATH

Your bath should be an oasis.  
Our baths are exactly that.

Cabinetry: Full Access, Estridge, Sequence Flat Cut Walnut, Natural  
Design by: Kitchens Galore, Millbrae, CA



**PAINTED**

Pages 46-57

**STAINED**

Pages 58-63



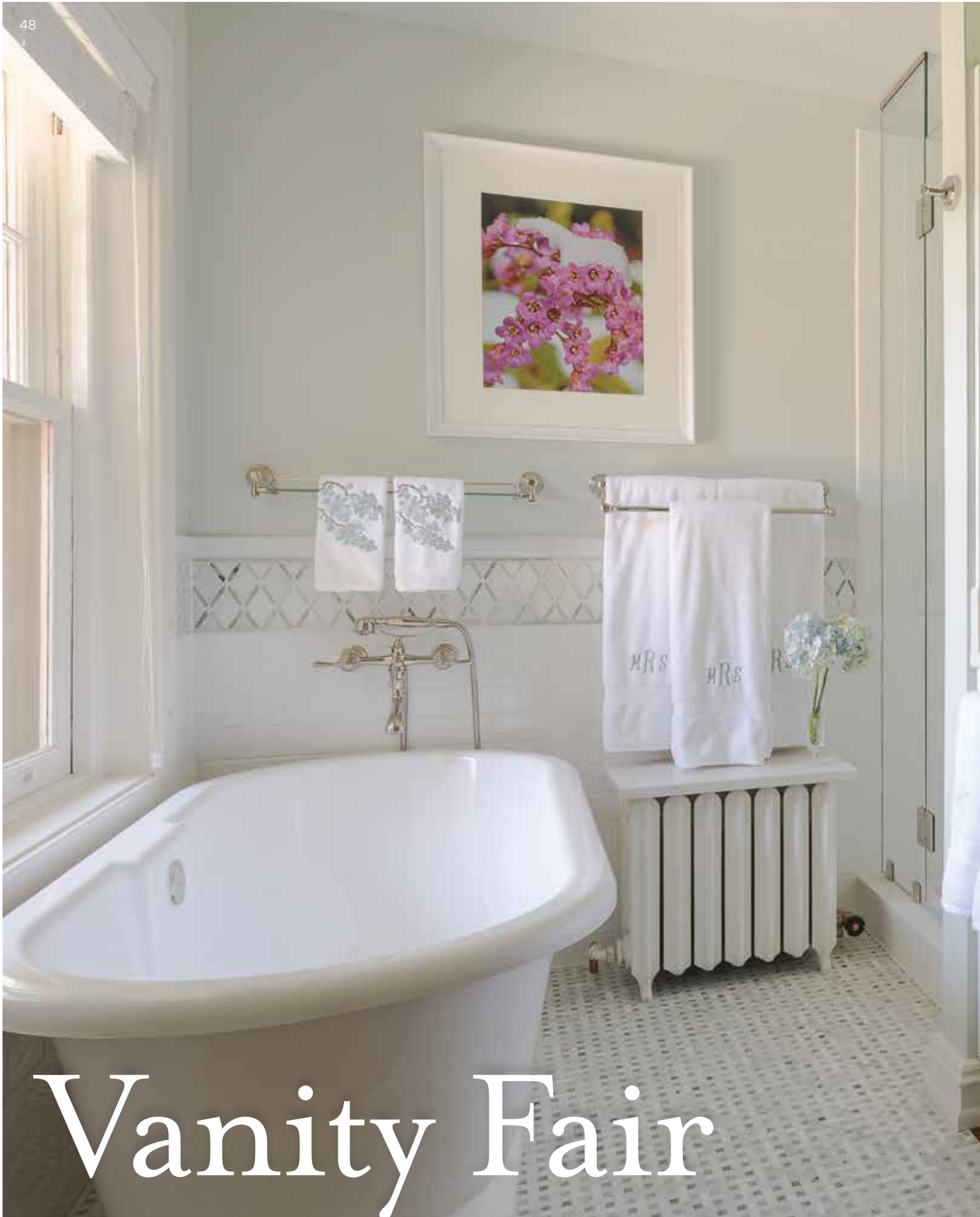
The images shown in this brochure are reasonably accurate. Please contact your Greenfield dealer to see actual samples.



# BATH | PAINTED

Pages 46-57

Wall cabinets: ER Inset, Frame: Paint Grade, Cameo, Doors: Ashbourne 231/Louver, Soot by Benjamin Moore®  
Base cabinets: Full Access, Ashbourne 231/Louver, Soot by Benjamin Moore®  
Design by: Kitchens Galore, Millbrae, CA



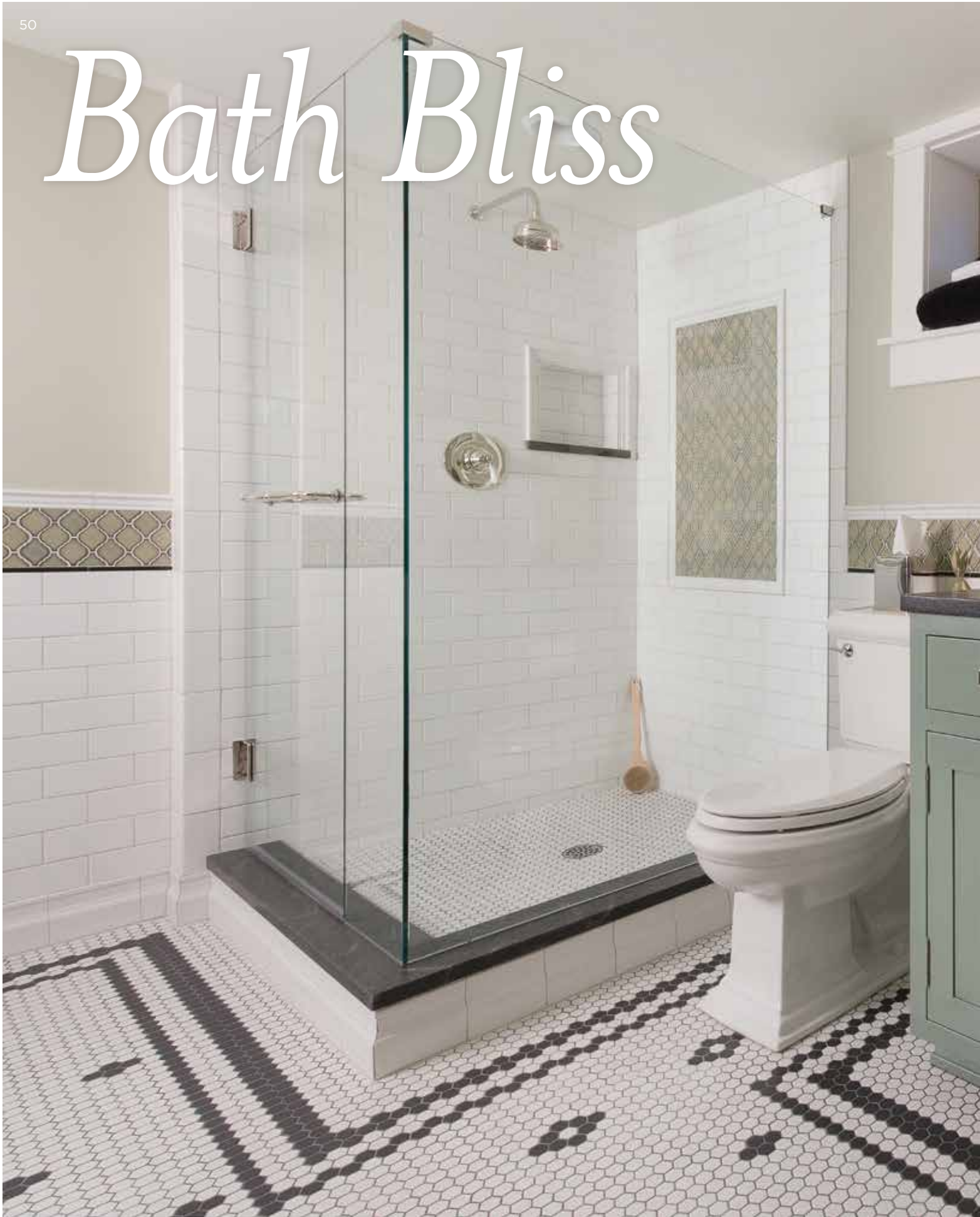
# Vanity Fair





Cabinetry: Beaded Inset, Catalina 275 A, Paint Grade, Glacier  
Design by: Classic Homeworks, Denver, CO

# *Bath Bliss*





Cabinetry: SR Inset, Jamestown 231 H,  
Paint Grade, Verbena, Black Glaze  
Design by: Classic Homeworks, Denver, CO



# *A Study in Style*

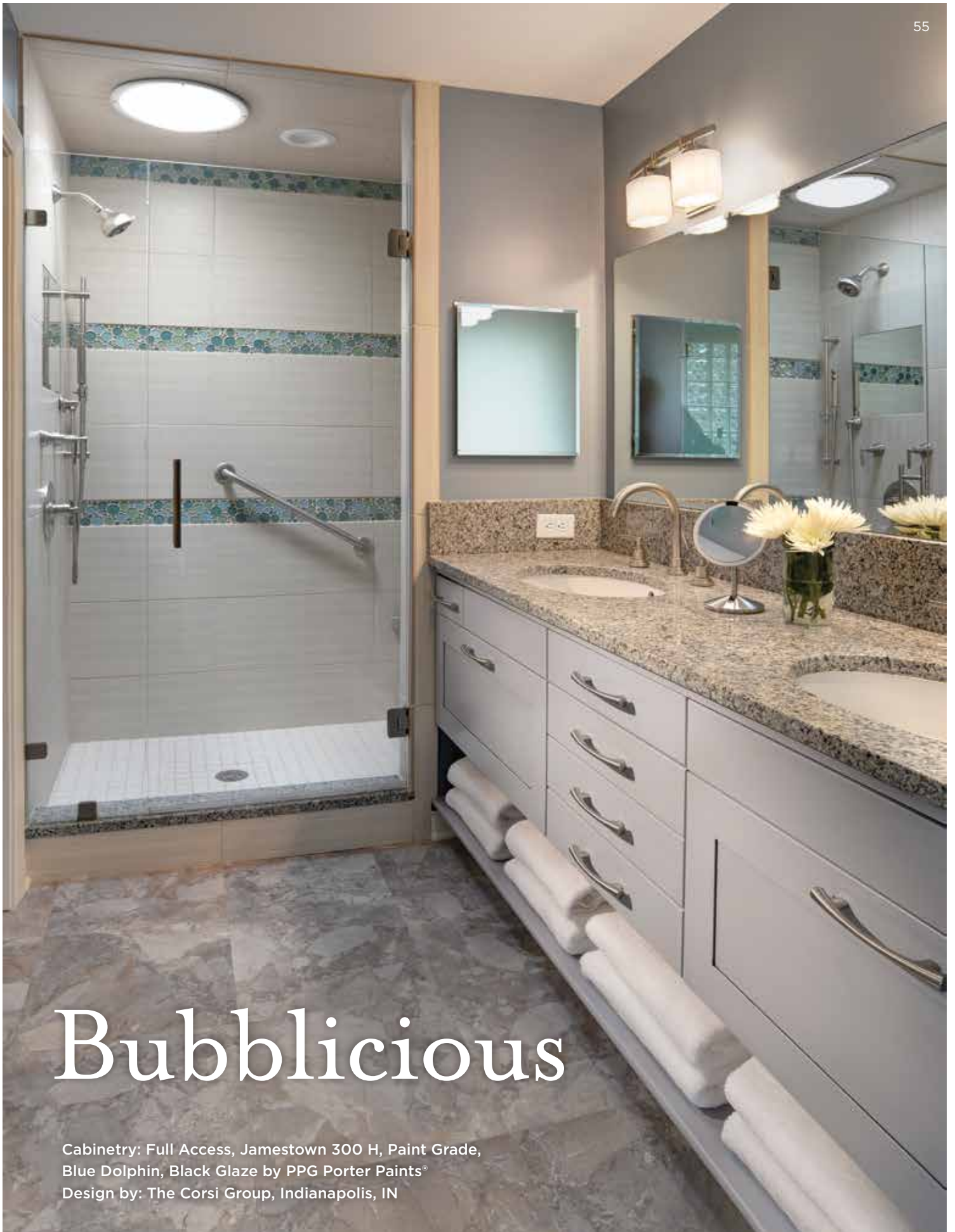


Cabinetry: Full Access, Kinnear 275 A, Paint Grade, Kendall Charcoal by Benjamin Moore®  
Design by: Studio Swann, LLC, Chicago, IL

# SMALL WONDER



Cabinetry: Full Access, Augusta A,  
Paint Grade, Glacier  
Design by: Studio Swann, LLC, Chicago, IL



# Bubblicious

Cabinetry: Full Access, Jamestown 300 H, Paint Grade,  
Blue Dolphin, Black Glaze by PPG Porter Paints®  
Design by: The Corsi Group, Indianapolis, IN



# *Relaxation*

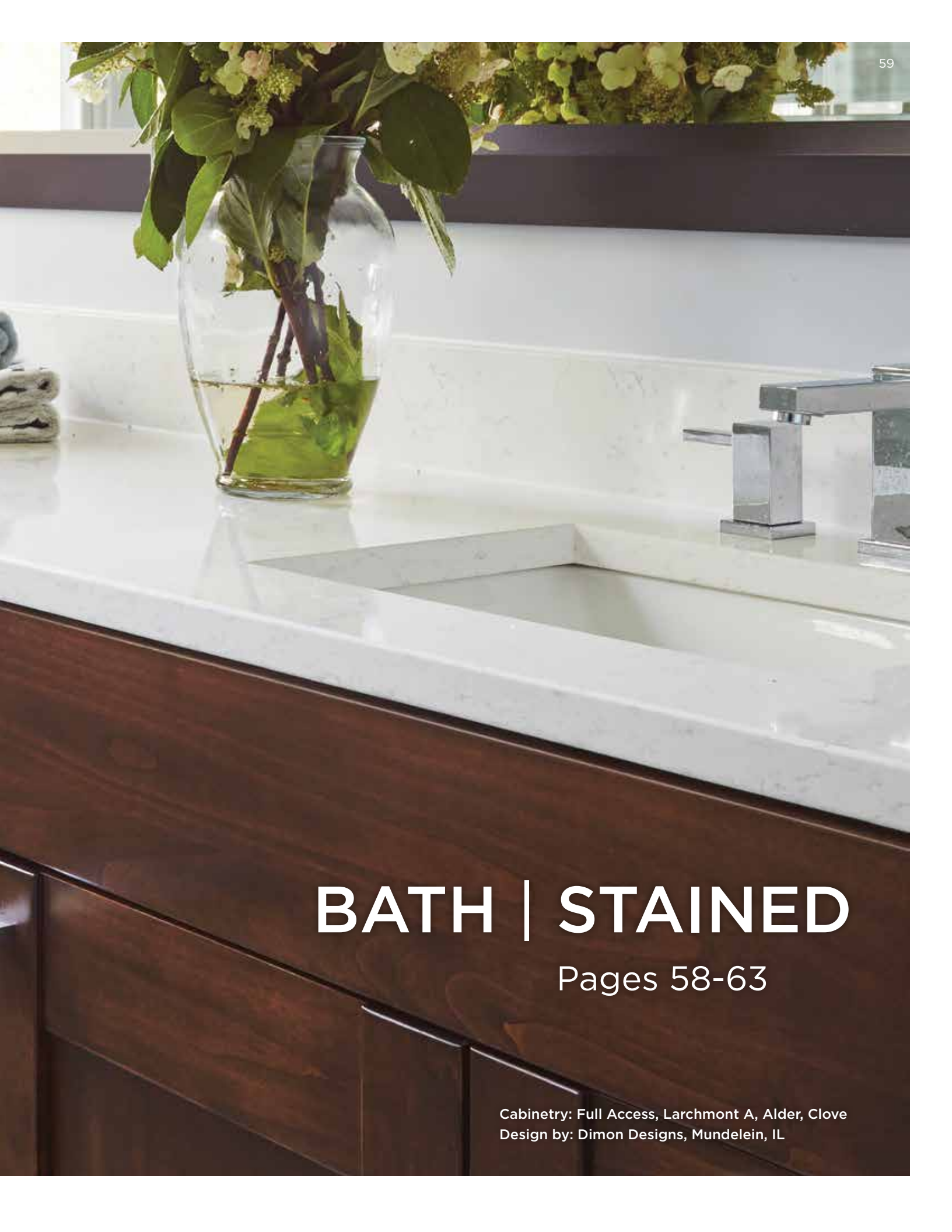




# Station

Cabinetry: Full Access, Hancock A, Paint Grade, Gauntlet  
Design by: FMA Interior Design, Chicago, IL





# BATH | STAINED

Pages 58-63

Cabinetry: Full Access, Larchmont A, Alder, Clove  
Design by: Dimon Designs, Mundelein, IL



**Cabinetry: Full Access, Estridge, Sequence Flat Cut Cherry, Timber**  
**Design by: Bluestem Construction, St. Louis Park, MN**

# FASHION FORWARD





# PERSONAL

The images shown in this brochure are reasonably accurate. Please contact your Greenfield dealer to see actual samples.



Cabinetry: Full Access, Estridge,  
Comp Qtr Walnut, Natural  
Design by: Kitchens Galore,  
Millbrae, CA

SPACE

Pages 64-71

# MUDROOM & LAUNDRY ROOM

These may be the most design-neglected rooms of the home. Let's not let that happen to your home.





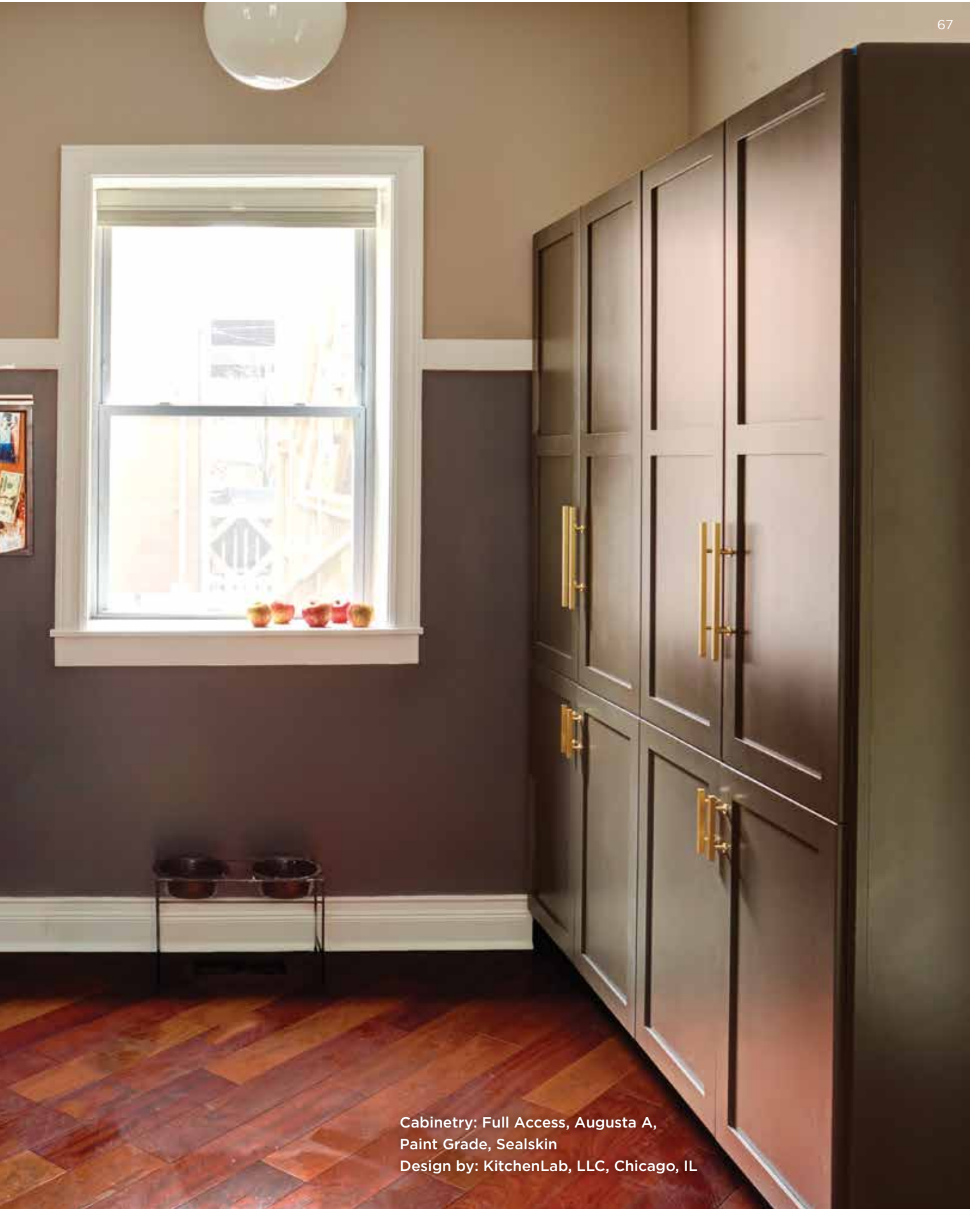
OM



Cabinetry: SR Inset Jamestown 231 H,  
Paint Grade, Black  
Design by: Classic Homeworks, Denver, CO



# *A Place for Everything*



Cabinetry: Full Access, Augusta A,  
Paint Grade, Sealskin  
Design by: KitchenLab, LLC, Chicago, IL

# Laundry Luxe



Cabinetry: Full Access, Jackson A,  
Paint Grade, Cityscape  
Design by: Laurie Trinch Interiors, Bloomfield, MI



# BASE CAMP

Cabinetry: Full Access, Farmington, Paint Grade,  
Maxi Teal by Sherwin-Williams®  
Design by: Design Group Three, Inc., Milwaukee, WI

## LAUNDRY



Cabinetry: Full Access, Jackson A, Paint Grade, Cameo  
Design by: Kitchens Galore, Millbrae, CA

# DAY HAPPY DAY



# FAMILY ROOM & HOME OFFICE

Family time or work time,  
it's always time for a custom fit space.

## PAINTED

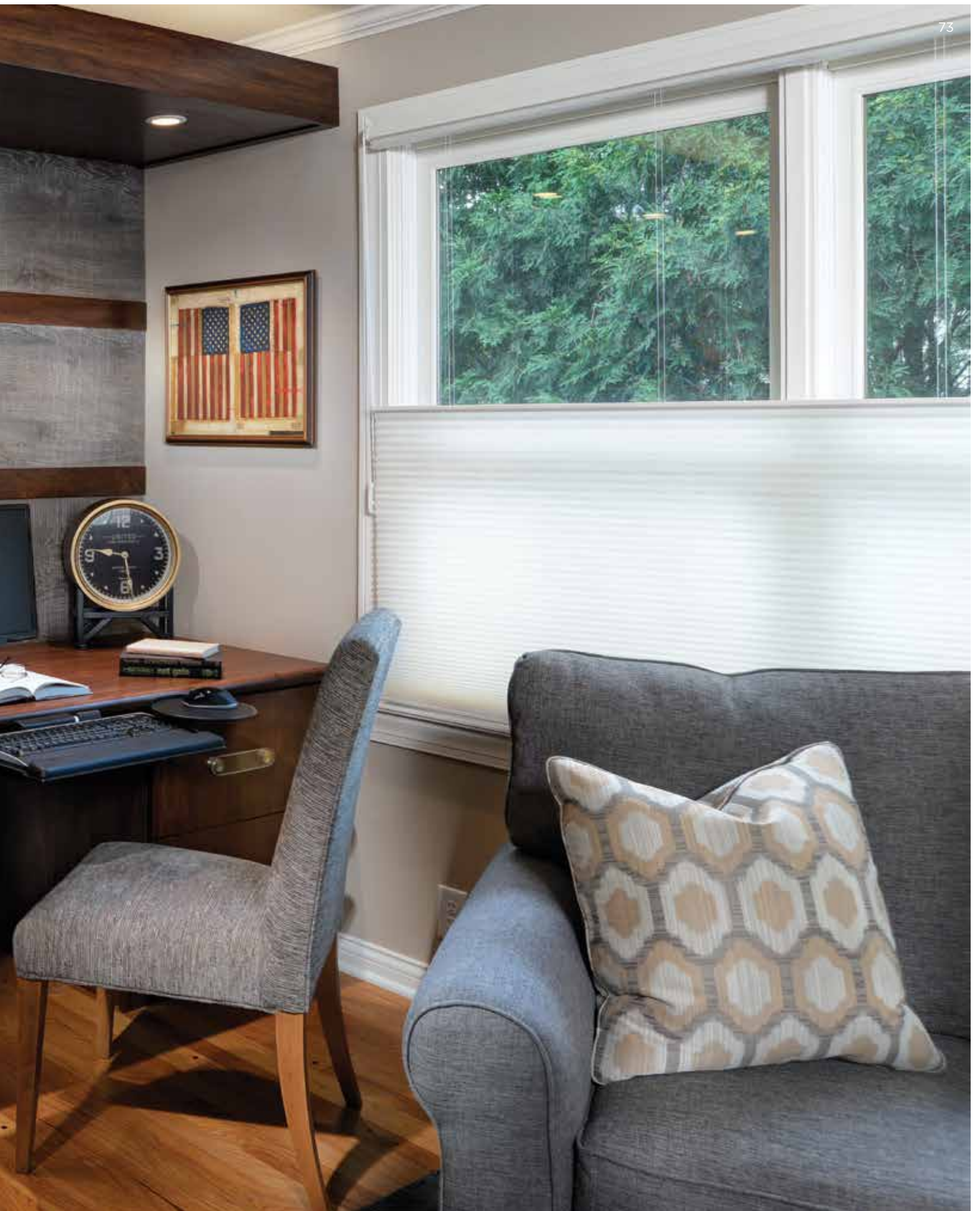
Pages 74-79

## STAINED

Pages 80-83

Desk: Full Access Door style: Sequence Flat Cut Walnut Natural, Estridge  
Paneling: Textured European Oak, Custom Stain, Limed, Alder, Federal  
Design by: The Corsi Group, Indianapolis, IN







# FAMILY ROOM & HOME OFFICE | PAINTED

Pages 74-79

Cabinetry: Beaded Inset, Dalton 275 A, Paint Grade, Surfside  
Design by: Housefitters & Tile Gallery, Nantucket, MA

# HOMEROW



Cabinetry: Full Access, Farmington, Paint Grade, Cameo  
Design by: Kitchens Galore, Millbrae, CA

# ORK HUB



Cabinetry: Beaded Inset, Dalton 275 A, Paint Grade, Surfside  
Design by: Housefitters & Tile Gallery, Nantucket, MA



# Book Nooks

The images shown in this brochure are reasonably accurate. Please contact your Greenfield dealer to see actual samples.

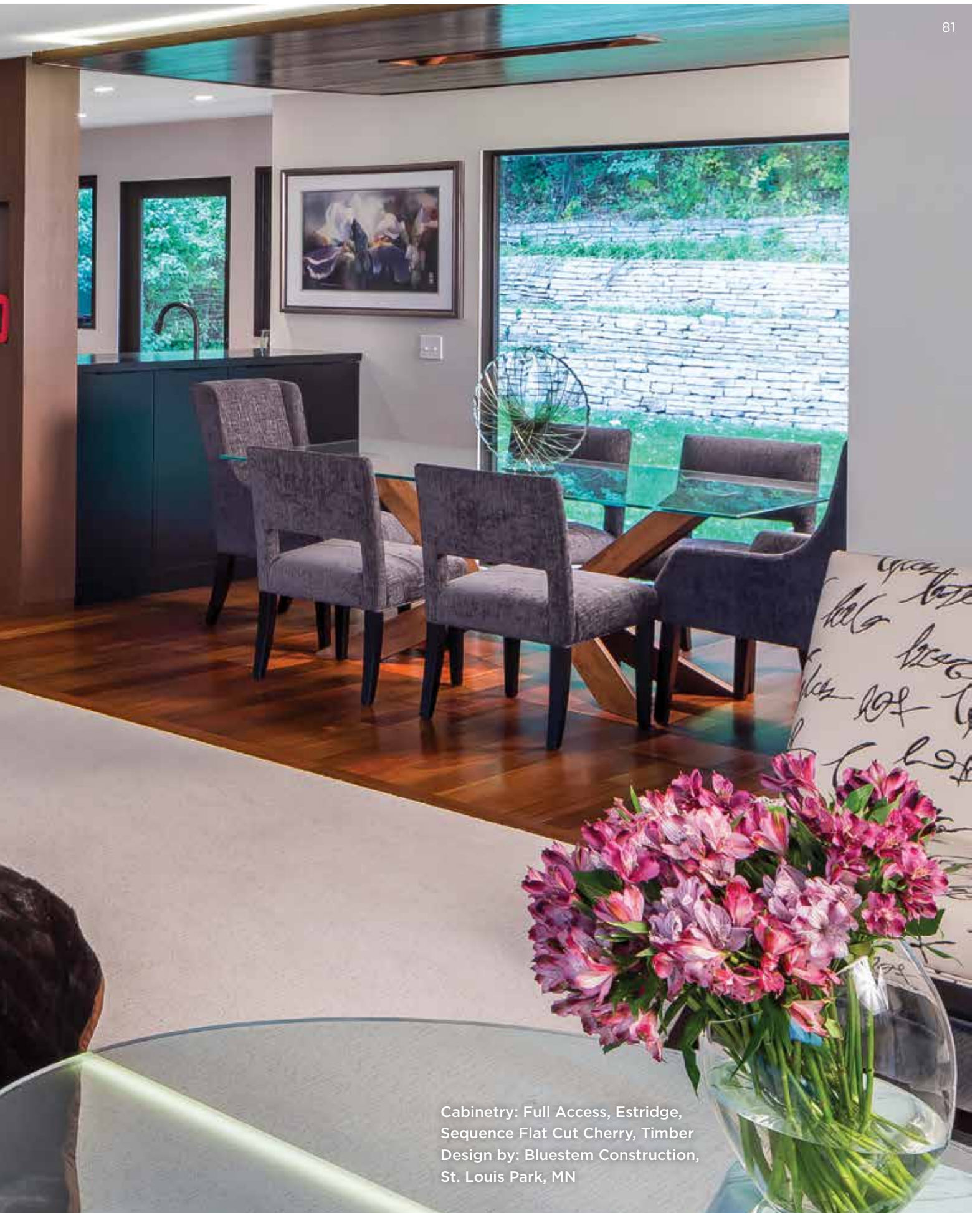




# FAMILY ROOM & HOME OFFICE | STAINED

Pages 80-83





Cabinetry: Full Access, Estridge,  
Sequence Flat Cut Cherry, Timber  
Design by: Bluestem Construction,  
St. Louis Park, MN

# Modern Family



Cabinetry: ER Inset, Catalina 275 A, Walnut, Custom Stain  
Design by: Dove Design Studio, Short Hills, NJ



**PAINTED**  
Pages 86-91

**STAINED**  
Pages 92-95

**XO**

# OTHER SPACES

Don't overlook these important spaces.  
Custom cabinets complete the look.



Tall post: Full Access, Estridge, Sequence Flat Cut Cherry, Custom Stain  
Base cabinets: Full Access, Estridge, Sequence Flat Cut Cherry, Timber  
Design by: Bluestem Construction, St. Louis Park, MN

Cabinetry: Beaded Inset, Augusta A,  
Paint Grade, Inkwell by Sherwin-Williams®  
Design by: KitchenLab, LLC, Chicago, IL

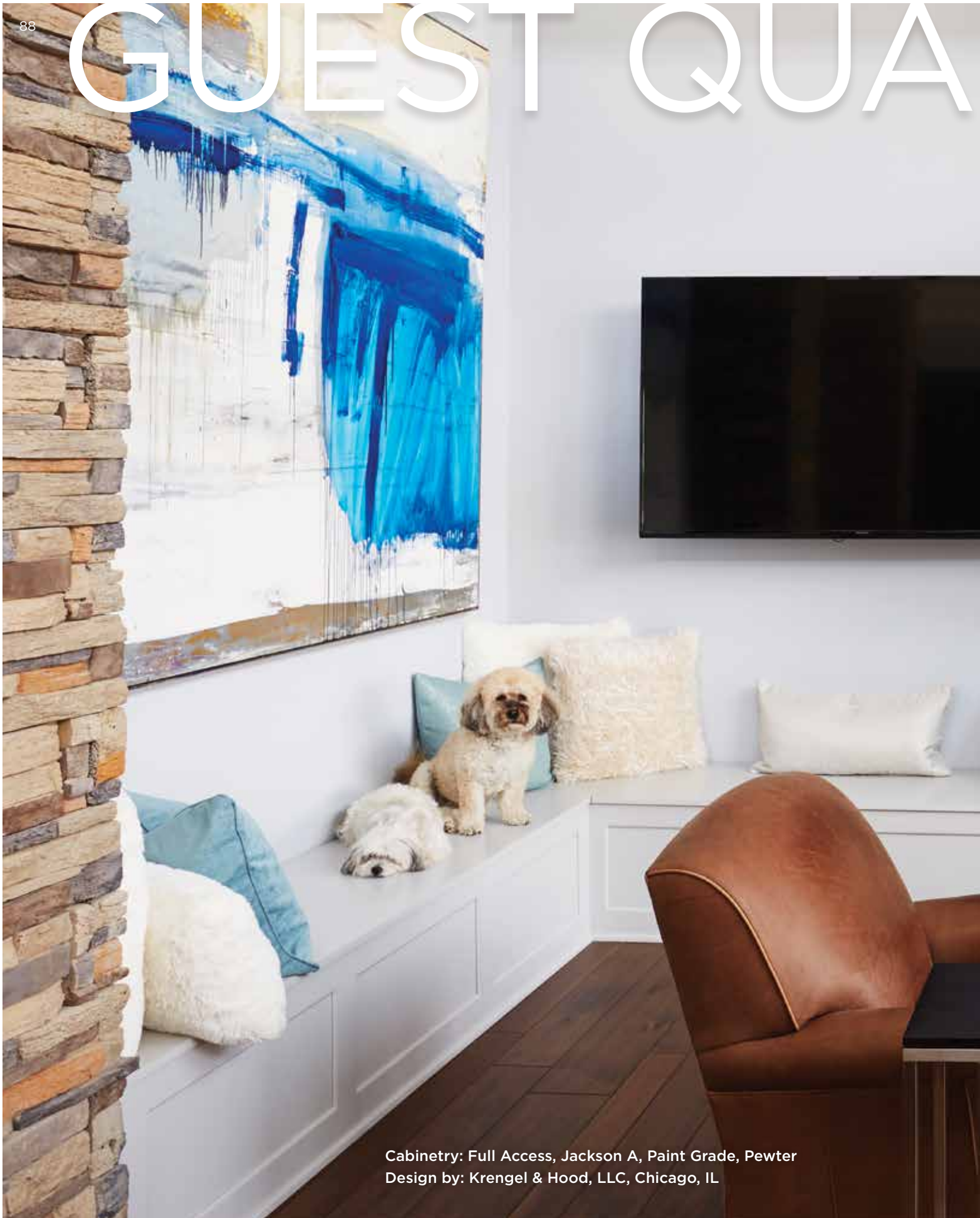


# OTHER SPACES | PAINTED

Pages 86-91



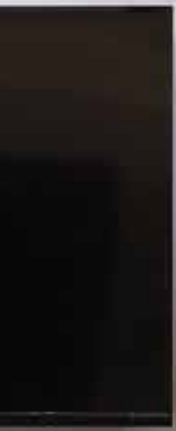
# GUEST QUARTERS



Cabinetry: Full Access, Jackson A, Paint Grade, Pewter  
Design by: Kregel & Hood, LLC, Chicago, IL



# ARTERS





# *American Beauty*



Cabinetry: SR Inset, Jackson A, Paint Grade, Cameo  
Design by: Studio Swann, LLC, Chicago, IL

# OTHER SPACES | STAINED

Pages 92-95

Cabinetry: Full Access, Fremont 300 A,  
Quarter Sawn White Oak, Barnwood, Limed  
Design by: Studio Swann, LLC, Chicago, IL







Cabinetry: SR Inset, Jamestown 231 H,  
Quarter Sawn White Oak, Cabernet, Black Glaze  
Design by: Classic Homeworks, Denver, CO

# MANTASTIC





# Welcome Home

Our cabinets are proudly made in West Virginia and Indiana.

Greenfield cabinetmakers have that special blend of old world attention to detail, combined with modern technical expertise. It's the best of both worlds.

For more information, visit [GreenfieldCabinetry.com](http://GreenfieldCabinetry.com).

*Greenfield*   
C A B I N E T R Y

To avoid dimensional changes in or damage to components of finished wood cabinetry, we recommend maintaining your environment between 25% and 50% relative humidity and a temperature range of 40 to 100 degrees.

Benjamin Moore® is a registered trademark of Benjamin Moore & Co.  
Sherwin-Williams® is a registered trademark of Sherwin-Williams.